

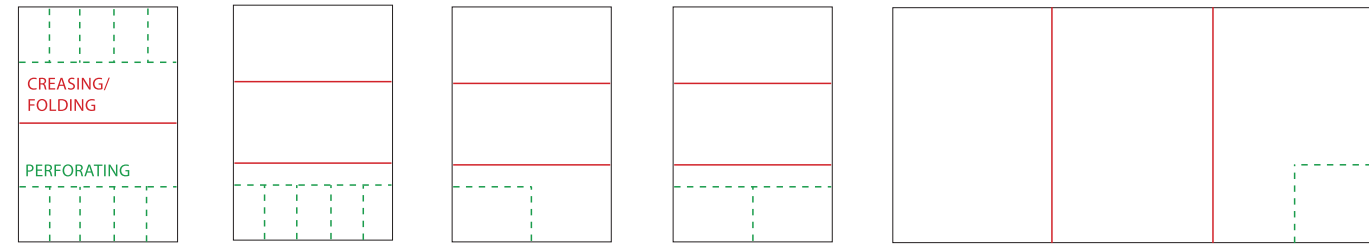
# TOUCHLINE CP375 DUO

## Technical Specifications Perforating & Creasing TOUCHLINE CP375 DUO

Feeder system	suction feeder	Working system	Multigraf Quick-Set
Feeder capacity	180 mm (7")		interchangeable tools
Paper size minimum	105 x 148 mm (4.13" x 5.83")	Reception tray height	120 mm (4.75")
Paper size maximum	375 x 660 mm (14.75" x 26") 375 x 1'050 mm with table extension (41.3")	Delivery belt	optional shingling delivery, L = 1'100 mm (43.3")
Paper stocks perforating	80-300 gsm*	Speed	depending on job, up to 6'000
Paper stocks creasing	80-400 gsm*	Dimension	1'800 x 600 x 1'200 mm (71"x23.5"x47.5")
Control panel	touchscreen	Weight	158 kg (348 lb)
Double sheet detection	ult rasonic	Electrical connection	100-240 VAC, 50/60 Hz

\*Paper stocks depending on material quality.

## Sample Applications In One Operation



## Standard Tools Cross Direction

	Perforating	Creasing
Tool detection	automatic	automatic
Pressure adjustment	3 depths for each style	3 depths for each style
Number of tools (standard)	1 perforating tool, 11 TPI	1 negative creasing tool
Optional perforating knife	17 TPI and 26 TPI	-
Additional tools	stop perforating tool, opt.	positive creasing tool, Opt.
Number of operations	up to 20 per sheet	up to 20 per sheet
Minimum distance	3 mm (0.12")	1 mm (0.04")
Time perforating/creasing	yes, optional	

## Rotary Tools Feed Direction

Perforating	max. 4 heads simultaneously
Standard perforation	11 TPI (optional: 17 TPI / 26 TPI)
Minimum distance	30 mm (1.18"), from line to line
Distance time perforation	min. 5 mm (0.2")
Number of perforations	1-5 per sheet



# TOUCHLINE CP375 DUO & TCF375

## Technical Specifications Perforating, Creasing & Folding TOUCHLINE CP375 DUO & TCF375

Feeder system	suction feeder	Double sheet detection	ult rasonic
Feeder capacity	180 mm (7")	Working system	MultigrafQuick-Set interchangeable tools
Sheet transfer device	vacuum belt	Deliveries	folding = shingling delivery
Paper size minimum	105 x 148 mm (4.13" x 5.83")		creasing only = lower reception tray
Paper size maximum	375 x 660 mm (14.75" x 26") 375 x 1'050 mm (41.3") with table ext.	Speed	depending on job, up to 6'000
Paper stocks perforating	80-300 gsm	Dimension	3'185 x 600 x 1'340 mm (125x23.5x53")
Paper stocks creasing & folding	100-400 gsm *	Weight	338 kg (745 lb)
Control panel	touchscreen	Electrical connection	100-240 VAC, 50/60 Hz

\*Paper stocks depending on material quality.

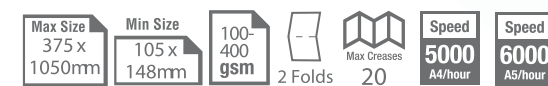


Multiple applications  
The creasing tools (positive and negative) as well as the perforating tools (standard and stop perforation) may be used on either tool position.

- 1 Creasing tool negative
- 2 Creasing tool positive



Two cross tool positions  
The creasing and perforating tools are automatically detected and the relevant pressure is automatically set. No manual adjustments are needed.



PDS  
Print Digital Solutions  
5230 Finch Ave. East  
Toronto, ON. M1S 4Z9  
T (416) 297-7996  
T (800) 608-4506  
www.PrintFinishingEquipment.ca



# TOUCHLINE C375

## Technical Specifications Creasing TOUCHLINE C375

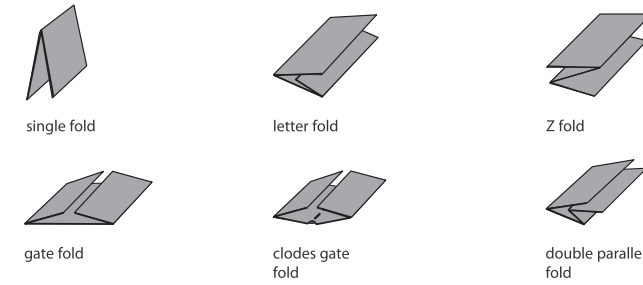
Feeder system	suction feeder	Double sheet detection	ultrasonic
Feeder capacity	180 mm (7")	Creasing system	creasing bar
Paper size minimum	105 x 148 mm (4.13" x 5.83")	Reception tray height	120 mm (4.75")
Paper size maximum	375 x 660 mm (14.75" x 26") 375 x 1'050 mm with table extension (41.3")	Speed	depending on job, up to 6'000
Paper stocks creasing	80-400 gsm *	Dimension	1'700 x 600 x 1'200 mm (67 x 23.5 x 47.5")
Control panel	touchscreen	Weight	125 kg (275 lb)
		Electrical connection	100-240 VAC, 50/60 Hz

\*Paper stocks depending on material quality.

## Creasing Tool

Pressure adjustment	3 depths, automatically adjustable by touchscreen
Number of tools	1 creasing tool = 2 different styles more creasing tools optionally available
Number of operations	up to 20 per sheet
Minimum distance	1 mm (0.04")
Perforation	no

Creasing patterns for the following fold types are included in the standard program:



# TOUCHLINE CF375

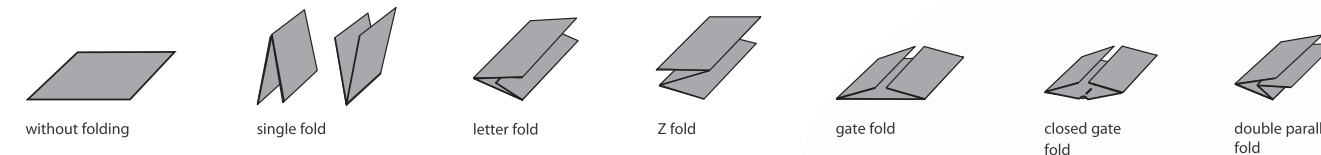
## Technical Specifications Creasing & Folding TOUCHLINE CF375

Feeder system	suction feeder
Feeder capacity	180 mm / 660 mm (7" / 26")**
Paper size minimum	105 x 148 mm (4.13" x 5.83")
Paper size maximum	375 x 660 mm (14.75" x 26") 375 x 1'050 mm with table ex t. (41.3")
Paper stocks	100-400 gsm *
Control panel	touchscreen
Double sheet detection	ultrasonic
Creasing system	Multigraf Swingbar
Creasing styles	1 creasing bar = 2 styles
Crease depths	3 automatic setups
Number of creases	20

Minimum crease distance	30 mm (1.18")
Fold system	Multigraf Pro-Knife
Number of folds	2
Fold length minimum	30 mm (1.18")
Fold length maximum	500 mm (19.78")
Delivery belt length	820 mm (32.28")
Reception tray height	120 mm (4.75")
Speed	depending on job, up to 6'000
Dimension	1'860 x 600 x 1'320 mm 2'775 x 678 x 1'122 mm**
Weight	196 kg / 308 kg (432 lb/679 lb)**
Electrical connection	100-240 VAC, 50/60 Hz

\*Paper stocks depending on material quality.

TOUCHLINE CF375 supports the following common fold types:



**Touchscreen**  
Very simple and menu driven operation. All elementary settings are entered directly over the touchscreen.



**One touch operation**  
A small, centralised and ergonomic operating panel offers all necessary functions for a fast production start.



**Vacuum pile feeder**  
The pile feeder is using a vacuum belt technology and air knife control for a perfect sheet separation. It handles paper sizes from 105 x 148 mm to 375 x 1'050 mm.



Max Size	375 x 1050mm	Min Size	105 x 148mm	80-400 gsm	Speed	5000 A4/hour	Speed	6000 A5/hour
----------	--------------	----------	-------------	------------	-------	--------------	-------	--------------



**Double sheet detection**  
A professional ultrasonic double sheet detection system which offers a 100% control of all sheets running through the machine.



**Two delivery sections**  
The delivery side consists of two different output levels. For creasing and folding, the upper delivery belt is used. For creasing only the lower reception tray.



**Perforating device**  
An online perforating device is available for the lower exit level as an option.



Max Size	375 x 1050mm	Min Size	105 x 148mm	100-400 gsm	2 Folds	Max Crosses	20	Speed	5000 A4/hour	Speed	6000 A5/hour
----------	--------------	----------	-------------	-------------	---------	-------------	----	-------	--------------	-------	--------------



**Perforating and creasing tools**  
The tools are automatically detected and the relevant pressure is automatically set. Additional tools may be stored in the especially designed parking slots.



**Rotary tools**  
Up to four perforating heads are available: all of them plug and play. The setup will be done within just a few seconds on the touchscreen control panel.



**Side guide system**  
The side guide unite features a very precise sheet infeed system: simple one hand operation, top guiding system for secure and straight infeed.



Max Size	375 x 1050mm	Min Size	105 x 148mm	80-400 gsm	Max Crosses	20	Speed	5000 A4/hour	Speed	6000 A5/hour
----------	--------------	----------	-------------	------------	-------------	----	-------	--------------	-------	--------------

## Technical Specifications Perforating & Creasing TOUCHLINE CP375 MONO

Feeder system	suction feeder
Feeder capacity	180 mm (7")
Paper size minimum	105 x 148 mm (4.13" x 5.83")
Paper size maximum	375 x 660 mm (14.75" x 26") 375 x 1'050 mm with table ex t. ((41.3")
Paper stocks perforating	80-300 gsm *
Paper stocks creasing	80-400 gsm *
Control panel	touchscreen
Double sheet detection	ultrasonic

\*Paper stocks depending on material quality.

Working system	Multigraf Quick-Set interchangeable tools
Reception tray height	120 mm (4.75")
Delivery belt	optional shingling delivery, L = 1'100 mm (43.3")
Speed	depending on job, up to 6'000
Dimension	1'700 x 600 x 1'200 mm (67x23.5x47.5")
Weight	128 kg (282 lb)
Electrical connection	100-240 VAC, 50/60 Hz